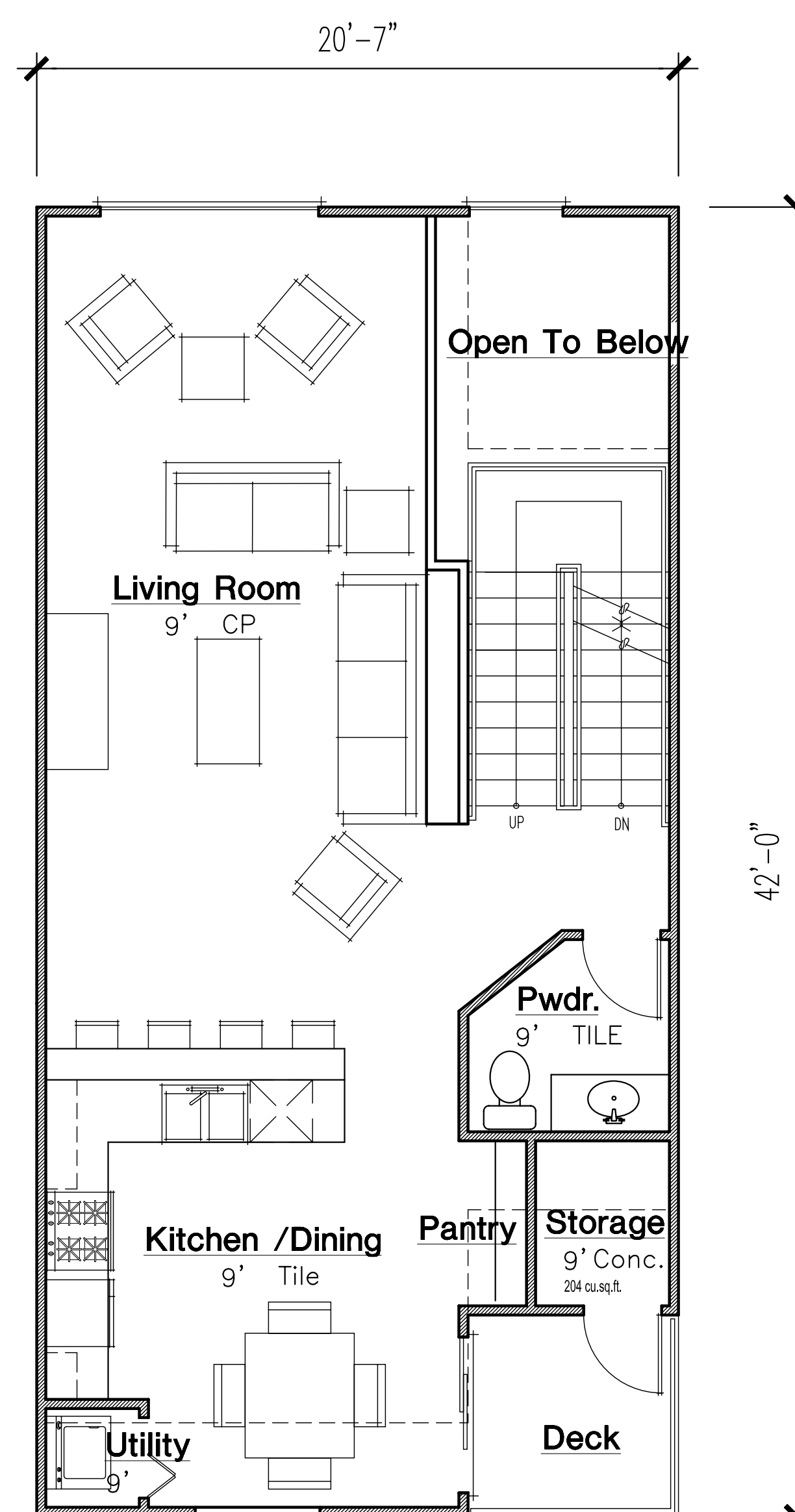
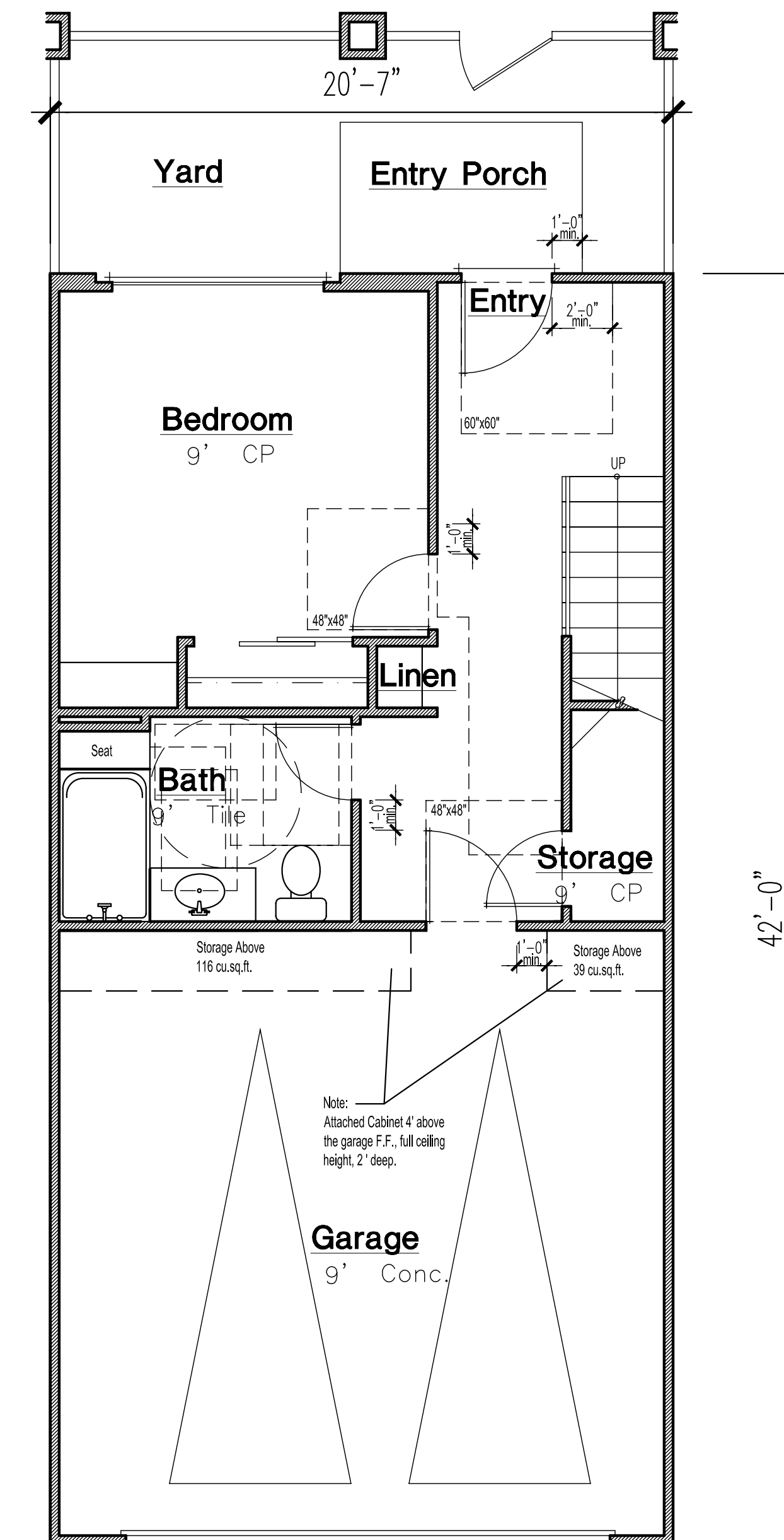


PLAN - 4 Third Floor - 532.0 Gross SF
 - 500.0 Net SF



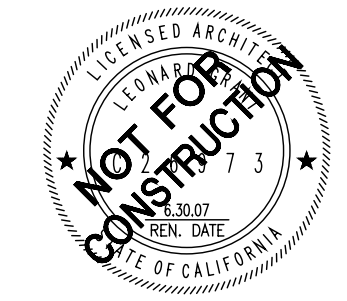
PLAN - 4 Second Floor - 753.7 SF



PLAN - 4

First Floor	- 446.8 SF
Second Floor	- 753.7 SF
Third Floor	- 500.0 SF
Total Unit Area	-1,700.5 SF
Garage	- 417.7 SF
Storage	- 359 cu.sq.ft

Plan - 4 Floor Plans



owner of record,
 approve this phase
 Schematic Design
 Design Development
 Construction Documents
 LGA may proceed with
 the next phase of drawings

Refugio
 237 McCoy Lane
 Santa Maria, CA 93455
 Weinstock Porter
 Development LLC

THESE DRAWINGS ARE
 INSTRUMENTS OF SERVICE AND
 ARE THE PROPERTY OF LGA
 ARCHITECTURE INC. ALL
 DESIGNS AND OTHER
 INFORMATION ON THESE
 DRAWINGS ARE FOR THE USE
 OF THE SPECIFIED PROJECT
 AND SHALL NOT BE USED
 OTHERWISE OR REPRODUCED
 WITHOUT THE EXPRESSED
 WRITTEN PERMISSION OF LGA
 ARCHITECTURE INC. ©2004

JOB# 05-039	
PM	MZD
REVIEW	Sub/Vison Review Comments
REVIEW	-